

DANDY

If you are not sure which size to choose, We will ask you to measure a similar garment you already have and compare these measures to the garments measures below. If you need other measures such as: longer sleeve, bigger waist etc. Pls send us an email at mtm@coloniaire.com and we are happy to help you out adjust the measures you require and make one garment specially for you.

A: Body length

- place your garment flat on the floor with the chest facing down towards the floor. Measure the length from the bottom of the neck to where the garment ends.

B: Shoulder width

- place your garment flat on the floor with the chest facing down towards the floor. Measure the shoulder width from side to side

C: Chest width

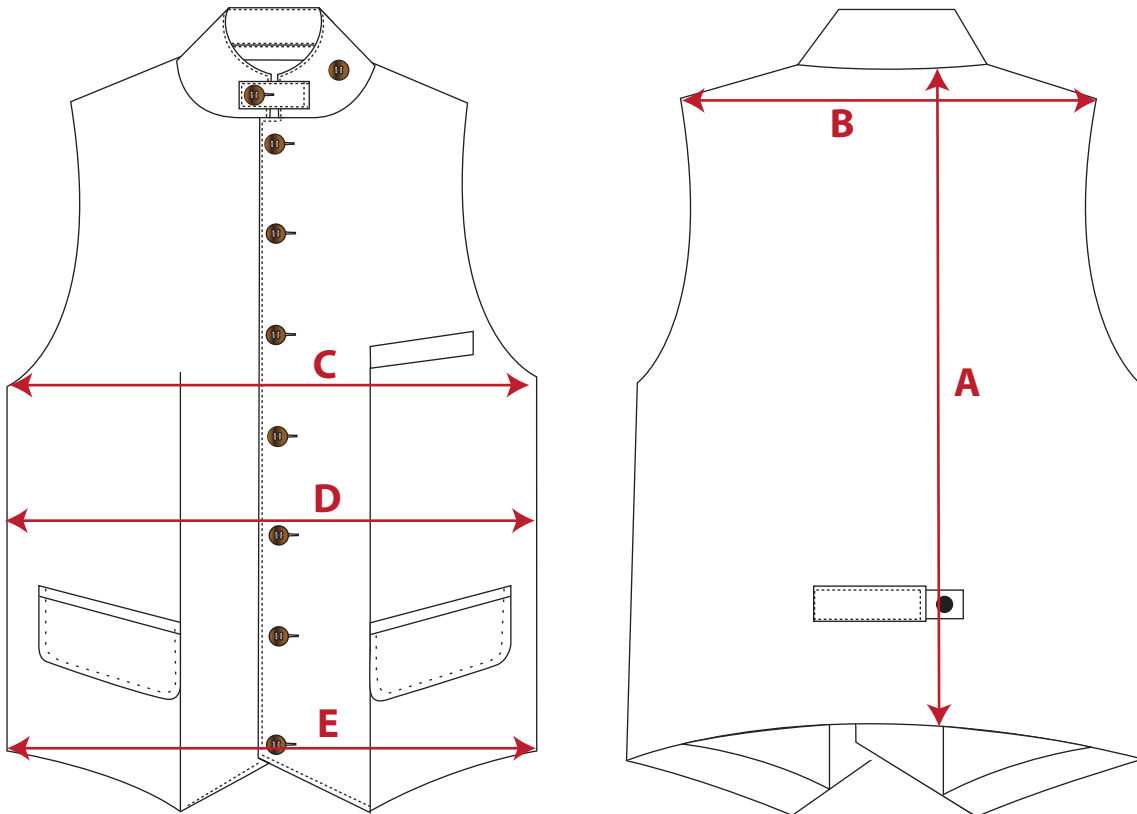
- place your garment flat with the front of garment facing up. Take the measure 2 cm below the armpit. Measure from armpit to armpit

D: Waist width

- place your garment flat with the front of garment facing up. Measure from edge to edge where the garment is at its narrowest. Around 18 cm below armpit

E: Bottom width

- place your garment flat with the front of garment facing up. Measure from edge to edge, 3 cm above the bottom end.



	XS	S	M	M/L	L	XL	XXL	XXXL
European size	44	46	48	50	52	54	56	58
US / UK size	34	36	38	40	42	44	46	48
	cm	cm	cm	cm	cm	cm	cm	cm
A: Body CB Lenght	53,5	54,5	55,5	56,5	57,5	58,5	59,5	60,5
B: Shoulder width	37,5	38,5	39,5	40,5	41,5	42,5	43,5	44,5
C: Half Chest width	45,5	47,5	49,5	51,5	53,5	56	58,5	61
D: Half waist width	44,5	46,5	48,5	50,5	52,5	55	57,5	60
E: Half Bottom width	44,5	46,5	48,5	50,5	52,5	55	57,5	60

* If the garment's fit is different from what is normal, we write a recommendation that you should select a bigger or smaller size than normal.