

SHOOTING COAT

If you are not sure which size to choose, measure a similar garment at home and compare these measures to the garments measures below.

If you need other measures such as: longer sleeve, bigger waist etc. Pls send us an email at mtm@coloniaire.com and we are happy to help you out changing the measures you want and make one garment specially for you.

A: Body length

- place your garment flat on the floor with the chest facing down towards the floor. Measure the length from the bottom of the neck to where the garment ends.

B: Shoulder width

- place your garment flat on the floor with the chest facing down towards the floor. Measure the shoulder width from side to side

C: Chest width

- place your garment flat with the back facing down towards the floor. Take the measure 2 cm below the armpit. Measure from armpit to armpit

D: Waist width

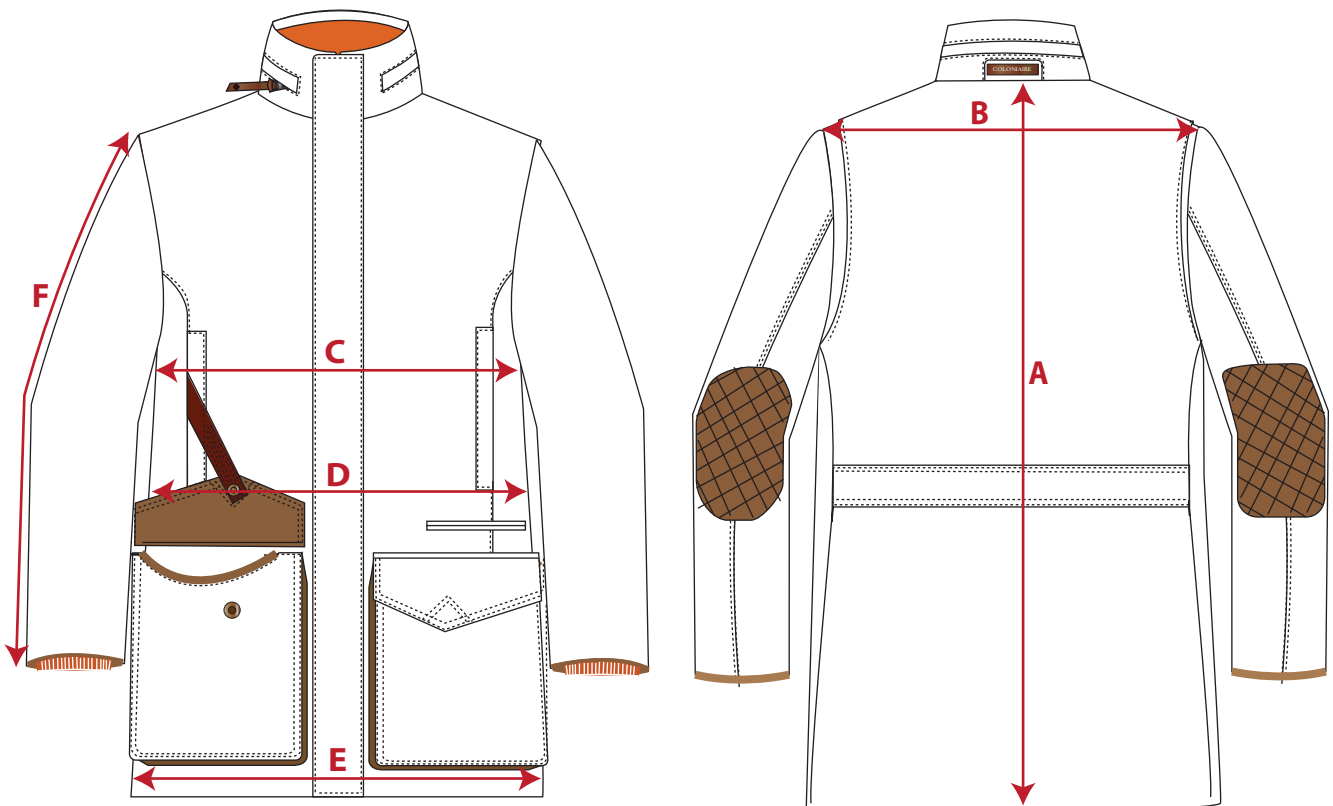
- place your garment flat with the back facing down towards the floor. Measure from edge to edge where the garment is at its narrowest. Around 18 cm below armpit

E: Bottom width

- place your garment flat with the back facing down towards the floor. Measure from edge to edge, 3 cm above the bottom end.

F: Sleeve length

- Measure from sleeve top to sleeve ending. If the garments has a cuff, include that in the measure. (cuff is included in our measurement chart below)



	XS	S	M	M/L	L	XL	XXL	XXXL
European size	44	46	48	50	52	54	56	58
US / UK size	34	36	38	40	42	44	46	48
	cm	cm	cm	cm	cm	cm	cm	cm
A: Body Length	81	82	83	84	85	86	87	88
B: Shoulder width	44,5	46	47,5	49	48,5	50	51,5	53
C: Half Chest width	51	53	55	57	59	61,5	64	66,5
D: Half waist width	52	55	56	58	60	62,5	65	67,5
E: Half Bottom width	53	55	57	59	61	63,5	66	68,5
F: Sleeve Length	64	64	65	66	67	68	69	69

* If the garment's fit is different from what is normal, we write a recommendation that you should select a bigger or smaller size than normal.