

# TRAILMASTER

If you are not sure which size to choose, measure a similar garment at home and compare these measures to the garments measures below.

If you need other measures such as: longer sleeve, bigger waist etc. Pls send us an email at [mtm@coloniaire.com](mailto:mtm@coloniaire.com) and we are happy to help you out changing the measures you want and make one garment specially for you.

## A: Body length

- place your garment flat on the floor with the chest facing down towards the floor. Measure the length from the bottom of the neck to where the garment ends.

## B: Shoulder width

- place your garment flat on the floor with the chest facing down towards the floor. Measure the shoulder width from side to side

## C: Chest width

- place your garment flat with the back facing down towards the floor. Take the measure 2 cm below the armpit. Measure from armpit to armpit

## D: Waist width

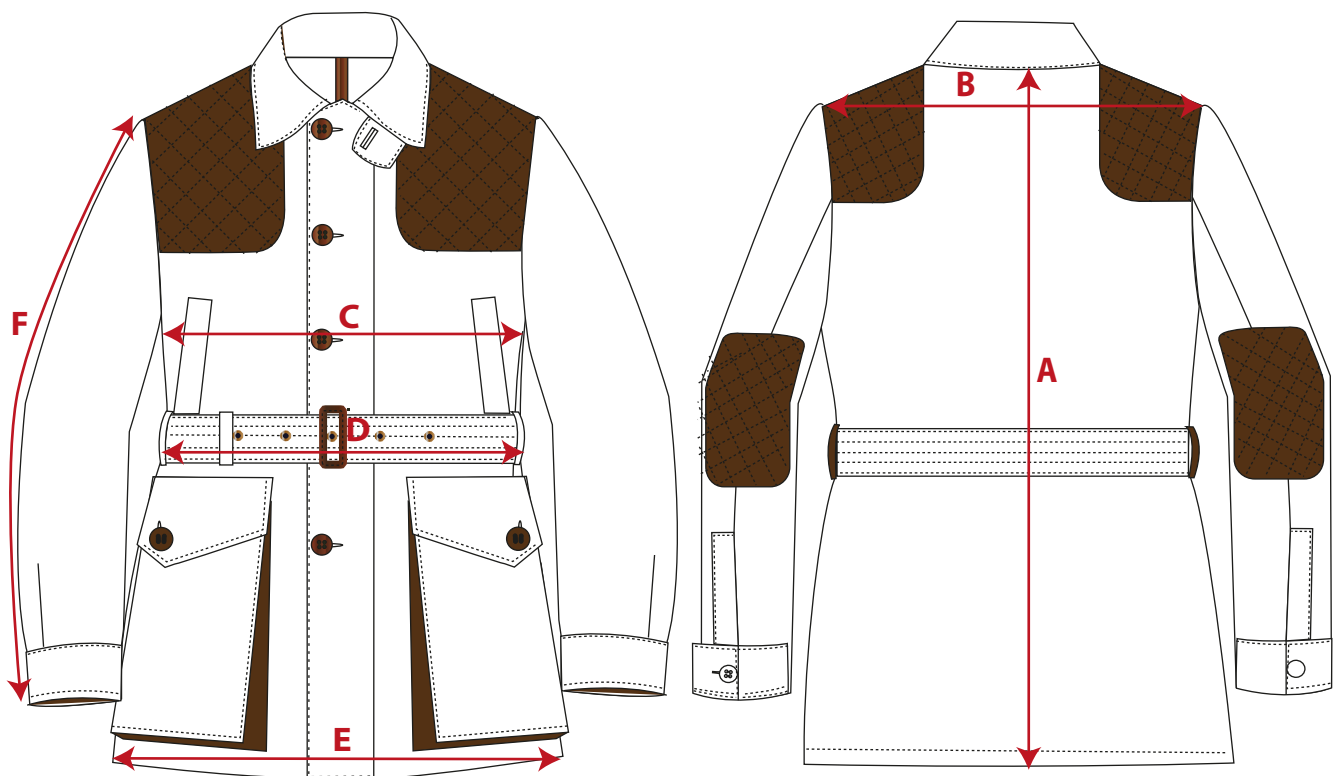
- place your garment flat with the back facing down towards the floor. Measure from edge to edge where the garment is at its narrowest. Around 18 cm below armpit

## E: Bottom width

- place your garment flat with the back facing down towards the floor. Measure from edge to edge, 3 cm above the bottom end.

## F: Sleeve length

- Measure from sleeve top to sleeve ending. If the garments has a cuff, include that in the measure. (cuff is included in our measurement chart below)



	XS	S	M	L	XL	XXL	3XL	4XL
<b>European size</b>	46	48	50	52	54	56	58	60
<b>US / UK size</b>	36	38	40	42	44	46	48	50
	cm	cm	cm	cm	cm	cm	cm	cm
<b>A: Body Length</b>	78	79	80	81	82	83	84	85
<b>B: Shoulder width</b>	44	45	46	47	48,5	50	51,5	53
<b>C: Half Chest width</b>	54,5	56,5	58,5	60,5	63	65,5	68	70,5
<b>D: Half waist width</b>	55,5	57,5	59,5	61,5	64	66,5	69	71,5
<b>E: Half Bottom width</b>	56	58	60	62	64,5	67	69,5	72
<b>F: Sleeve length</b>	64,5	65,5	66,5	67,5	68,5	69,5	70,5	71

\* If the garment's fit is different from what is normal, we write a recommendation that you should select a bigger or smaller size than normal.